

Operation and Installation Guide

USER MANUAL

A2-R0703TJ-V1

SAFETY INSTRUCTION

- Install the equipment in such way that the main supply plug or the connector of the equipment can be easily reached.
- Do not place the equipment where water can drip or splash onto it.
- Do not place sources of heat, such as ovens, furnaces, or burning candles, etc., and sources of magnetic fields, such as TVs,microwaves, etc..
- Do not block the ventilation slots of the equipment. When installing the equipment, leave some free space around it to provide adequate ventilation.
- Do not clean the equipment with spray cleaners or solvents. Unplug the power supply before cleaning.

CAUTION

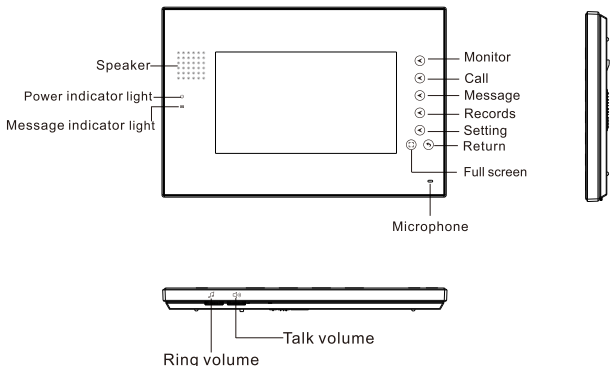
Do not disassemble the equipment freely. Mishandling, alternations or modifications not approved by the professional technician will void the warranty.

GENERAL FEATURES

This Video Door Phone System offers you complete control over the access of visitors to your house, in addition, it allows you to identify the person who calls and provides convenient operation to active the communicate.

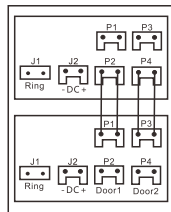
1. General introduction

1. Appearance(appearance,color and main interface ,dimension:241X161X18mm).



- Monitor: Press then enter into "monitor" interface, see page 5.
- Call: When visitors call from outdoor station press then enter into "visitors call from outdoor station" interface, see page 6.
- Message: Press then enter into "message" interface, see page 7.
- Records: Press then enter into "records" interface, see page 8.
- Setting: Press then enter into "setting" interface, see page 9.
- Return: Press then return main interface.
- Ring volume button (Increase/decrease the ringtone volume)
- Talk volume button (Increase/decrease the talking volume)

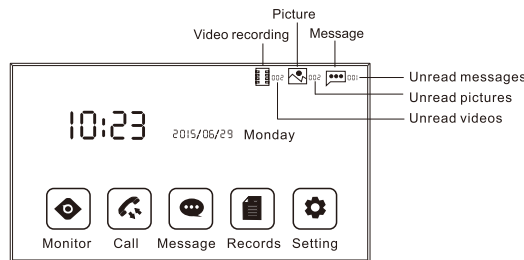
• Wiring terminals:



2. Functions

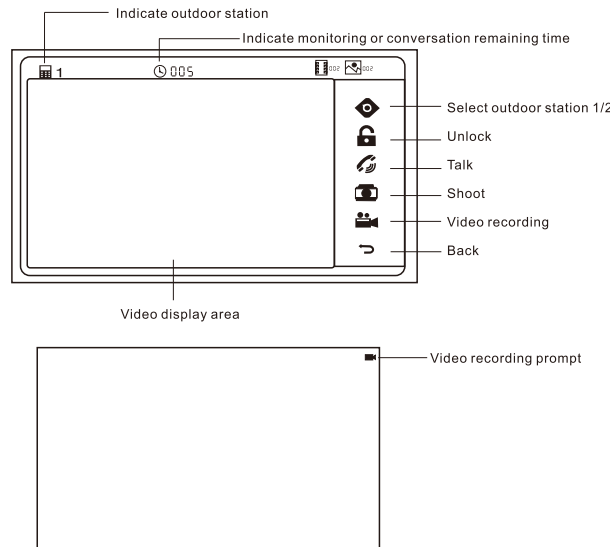
- Monitor: Can change to monitor door 1/door 2.
- Motion detection: Click the screen to activate motion detection function under monitoring mode of door1/2.
- Call transfer: Call transfer to other indoor monitor if the indoor monitor be connected 2 - 4pcs.
- Audio message function: Leave audio message from indoor monitor, up to 18s.
- Time setting: enter into time setting interface to set date or time, press return button to save and exit.
- System setting: select language / ringtones / picture position / message position; Format SD card; Touch correction.
- Video adjustment setting: enter video adjustment setting interface to adjust contrast, brightness and chroma.
- Check records: enter into records interface, to check / delete pictures, videos, messages or copy pictures and messages.

Main interface



Notice: the unread messages / pictures / videos will be added after new message / picture / video taking. The quantities will be reduced accordingly after delete them in the records interface.

Monitor

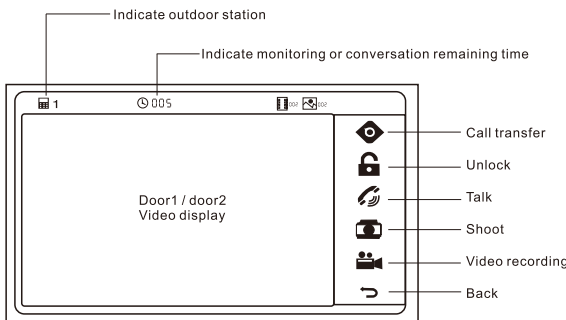


- Select outdoor station 1/2 (press this button to select door1 / door2)
- Unlock button (release the door lock)
- Talk button (default is outdoor station 1, press this button to call door1; Select door2, press this button to call outdoor station 2. When visitors call from outdoor station, press this button to start conversation, press again to end conversation. Or end conversation after 120s automatically)
- Shoot (press once to take a picture)
- Video recording (start or stop video recording by press this button)
- Back

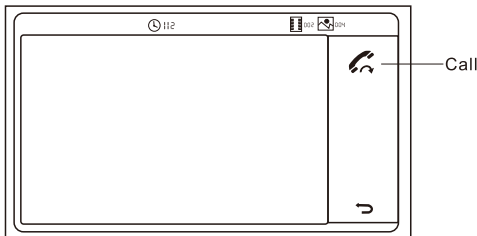
- Video recording prompt
- Video display area (to activate motion detection after touch full screen button under monitoring mode. Then record video automatically when something moves in front current channel, and icon " " will be flashing when recording. Press return button to exit motion detection.)

Notice: select door1 / door2 to activate motion detection function. Only can activate motion detection under current channel.

Visitors call from outdoor station

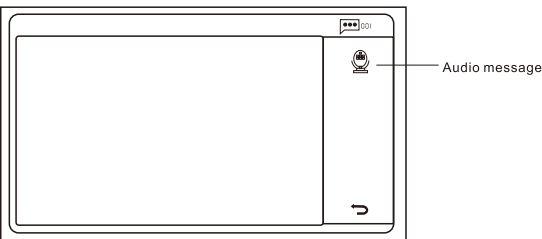


Call extension



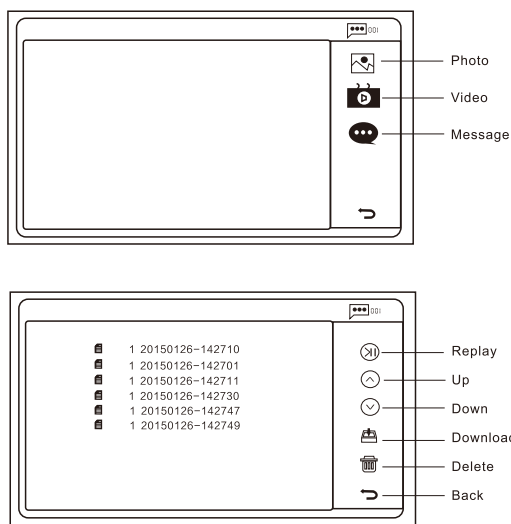
When the system be connected 2-4 pcs indoor monitors, press this button to transfer call to other indoor monitors. Press to transfer call again.

Message



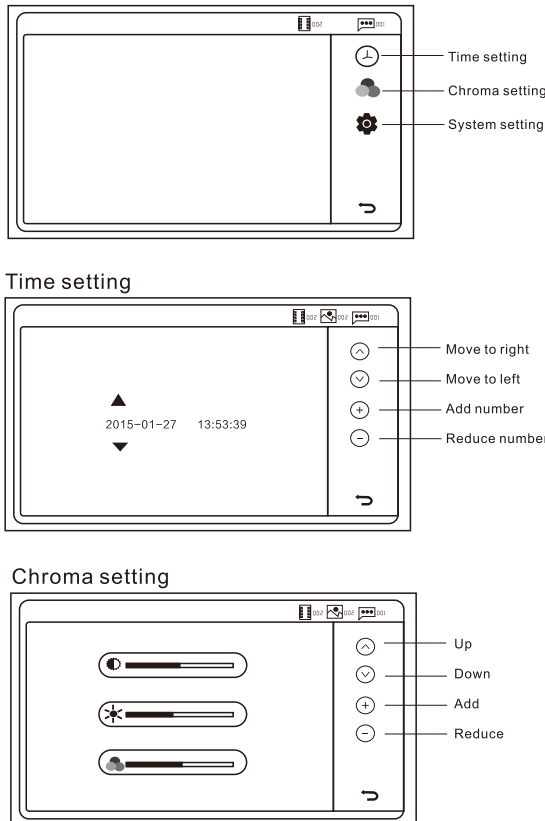
Press button to record audio message, up to 18s. Press again to stop.

Records



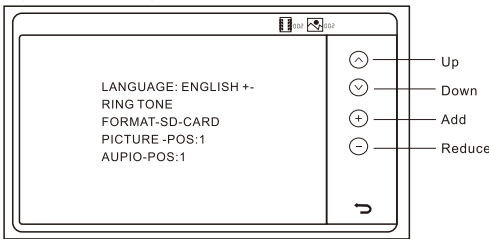
Notice: If storage be set to SD card, it will appear "please insert SD card" when to check pictures / videos / messages.

Setting



Can click the three progress bar icon to adjust directly
Notice: Default outdoor station is door1.

System setting



Operation instructions

Press to select options, press to add / reduce

- Language: English or Chinese
- Ringtones: three ringtones for option
- Format: to format the SD card
- Picture position: pictures can be stored in SD card or internal flash memory. "0" indicate internal flash memory, "1" indicate SD card. After set the SD card for picture storage, no picture will be stored if do not insert SD card.
- Message position: audio messages can be stored in SD card or internalflash memory. "0" indicate internal flash memory, "1" indicate SD card. After set the SD card for audio message storage, no message will be stored if do not insert SD card.

INSTALLATION

INSTRUCTION:

- (1)、Cable Requirement: ① non-stp core cable
② wire ≥ 0.5mm from outdoor station to the farthest monitor ≤ 70m
- (2)、The system can support up to 4 indoor monitors and 2 outdoor stations.
- (3)、Each video door phone should be with a power supply of 17V, 900mA.

Indoor monitor installation diagram

A2-R0703TJ-V1INSTALLATION DIAGRAM SKETCH

